

## Saladette XL Saladette, 4½ drawers (R452a)

ITEM # \_\_\_\_\_  
 MODEL # \_\_\_\_\_  
 NAME # \_\_\_\_\_  
 SIS # \_\_\_\_\_  
 AIA # \_\_\_\_\_



**725064 (SALXL4DR)**

4-½ drawers Refrigerated Counter, Saladette XL with raised container support, +2+4°C, 290lt, AISI 304 (on wheels) - R452A

### Short Form Specification

#### Item No.

External and internal in AISI 304 stainless steel. Worktop thickness mm50. Insulation thickness mm60. N. 4-½ drawers. Built-in refrigeration unit. Ventilated operating mode. Electronic control with external digital temperature display. Operating temperature: +2+4°C. For ambient temperature up to +32°C. CF and HCFC free. R452a gas in refrigeration circuit. Gas in foam: Cyclopentane. Mounted on wheels.

### Main Features

- 60 mm insulation for energy saving.
- Anti-tilt runners accept GN 1/1 containers.
- Forced air circulation for rapid cooling and an even temperature distribution.
- Suitable for use in ambient temperatures of up to 32 °C.
- No cross-contamination between upper and lower part (nothing will fall in the lower compartment).
- Electronic control with external digital temperature display.

### Construction

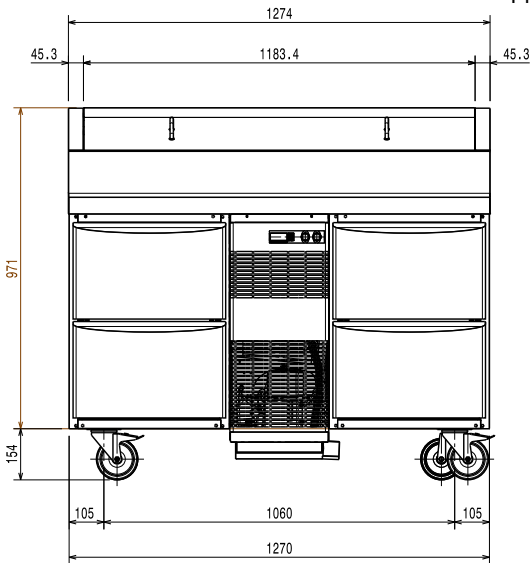
- Access to all components from the front.
- Built-in compressor to suit operating conditions.
- Developed and produced in ISO 9001 and ISO 14001 certified factory.
- Mounted on wheels.
- Rounded internal corners for ease of cleaning.
- Worktop in AISI 304 Stainless steel with a 50 mm profile.
- Constructed from AISI 304 Stainless steel throughout to meet the highest hygiene standards.
- Drawers made in 304 AISI stainless steel.
- Heavy duty, balanced stainless steel lid, easy to remove and turn to facilitate cleaning.
- Large front working top (400 mm depth).
- Easy to clean: removable internal support structure with no dirt traps for unbeatable hygiene.
- If needed, working top can be removed for easier handling during installation (in case of narrow doors).
- Environmentally friendly: R452a as refrigerant gas.

### Optional Accessories

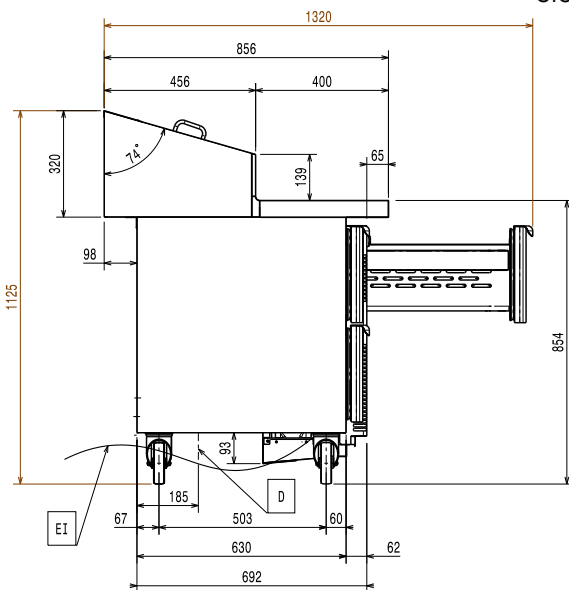
- Ethernet connector for IR33 (CAREL) Refrigerated Cabinets and Counters PNC 880252 ☐
- 1/1GN grey rilsan grid PNC 881435 ☐
- Lock for refrigerated counters PNC 881499 ☐
- Kit 2 drawers 1/2 and rack for Refrigerated Counter, Saladette XL PNC 881514 ☐
- Kit 3 drawers 1/3 and rack for Refrigerated Counter, Saladette XL PNC 881515 ☐

APPROVAL: \_\_\_\_\_

Front

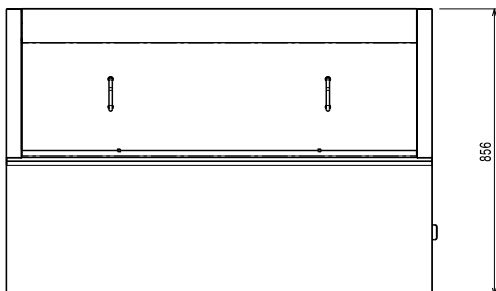


Side



D = Drain  
 EI = Electrical inlet (power)

Top



### Electric

Supply voltage:

725064 (SALXL4DR)

230 V/1 ph/50 Hz

### Key Information:

Gross capacity:	291 lt
External dimensions, Width:	1274 mm
External dimensions, Depth:	856 mm
External dimensions, Depth with Doors Open:	1110 mm
External dimensions, Height:	1122 mm
Type of external material:	304 AISI
Type of internal material:	304 AISI
Internal side panels material:	304 AISI
N° of drawers:	4x1/2

Built-in Compressor and Refrigeration Unit

### Refrigeration Data

Compressor power:	3/4 hp
Refrigerant type:	R452A
Refrigeration power:	1684 W
Refrigerant weight:	535 g
Operating temperature min.:	2 °C
Operating temperature max.:	4 °C